

I WALK THE WALK

# Art Walk

FIRST FRIDAY  
ART WALK

December 2008

Serving Springfield's Downtown Arts District

## December Events

**Saturday, Dec. 6**

The Miss Merrie Christmas Pageant is at 6 p.m. at The Gillioz.

**Friday, Dec. 12**

The Festival of Art at The Creamery offers free, hands-on arts activities for families 6-8 p.m. today and 2-4 p.m. Saturday, Dec. 13.

*White Christmas*, starring Bing Crosby and Rosemary Clooney, shows at 7 p.m. at The Gillioz today and Saturday. Tickets are \$5.

**Saturday, Dec. 13**

The Downtown Springfield Christmas Parade starts at 1 p.m. at Campbell and Mount Vernon. The theme is *Christmas at the Movies*, and the route is north on Campbell, east through the square and on to Jordan Valley Park.

**Thursday, Dec. 18**

Swan Repertory Theatre performs *A Christmas Carol* at The Gillioz at 7:30 p.m. Tickets are \$25 for adults, \$20 for students and \$12 for children. Performances continue Dec. 19, 20 and 21, including matinees.

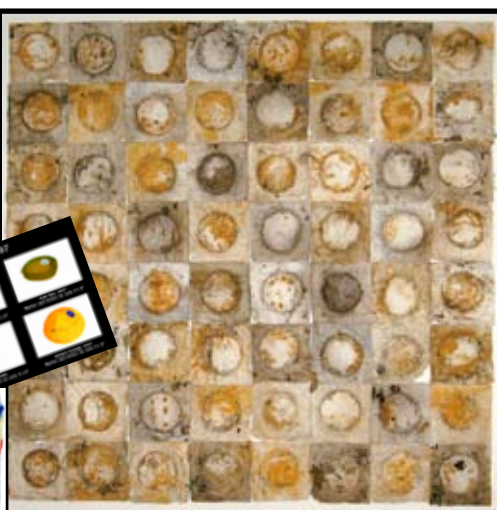
**Wednesday, Dec. 31**

First Night Springfield, presented by Hollywood Theatres, begins at 5:30 p.m. downtown, ending with fireworks at midnight in Jordan Valley Park. Tickets go on sale Dec. 8.

## SHAKE WELL AND BUY OFTEN

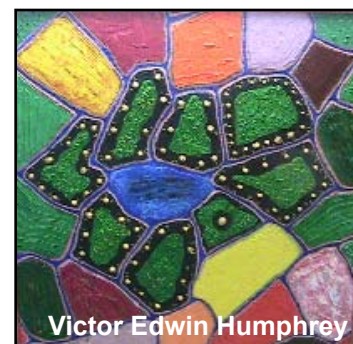
Artist Jeffrey Allen Price returns to Springfield from New York in a solo exhibition at Studio 405.

The show, *Shake Well and Buy Often*, includes Price's Gross Domestic Products series, featuring grocery products rendered Pop-style, and his Modules series, realized in hanging grids of weath-



ered, stained and embossed paper. The exhibit ends Dec. 27 with a gallery talk 5-6 p.m. and closing reception 6-8 p.m.

## New artists



Victor Edwin Humphrey

Storefront Studios features its newest artist, Victor Edwin Humphrey, during the Dec. 5 Art Walk, while Figment Art Gallery & Culture House debuts its newest member, sculptor, painter and jewelry maker Kelly Kennedy.

## Painters make splash on South

South Avenue is the place to be for home-grown Springfield artists.

Fitzwilly's Gifts & Antiques features Landscapes by painter Charli Stout, along with watercolors. Next door, at Nonna's Italian American Cafe, the spotlight is on painter Ina Crisman, a member of the Splatter group of artists.



A landscape of Tuscany by Charli Stout

Liquid Gold by Ina Crisman



## Obelisk joins Walk

Obelisk Home, 214 W. Phelps, joins Art Walk with two featured artists.

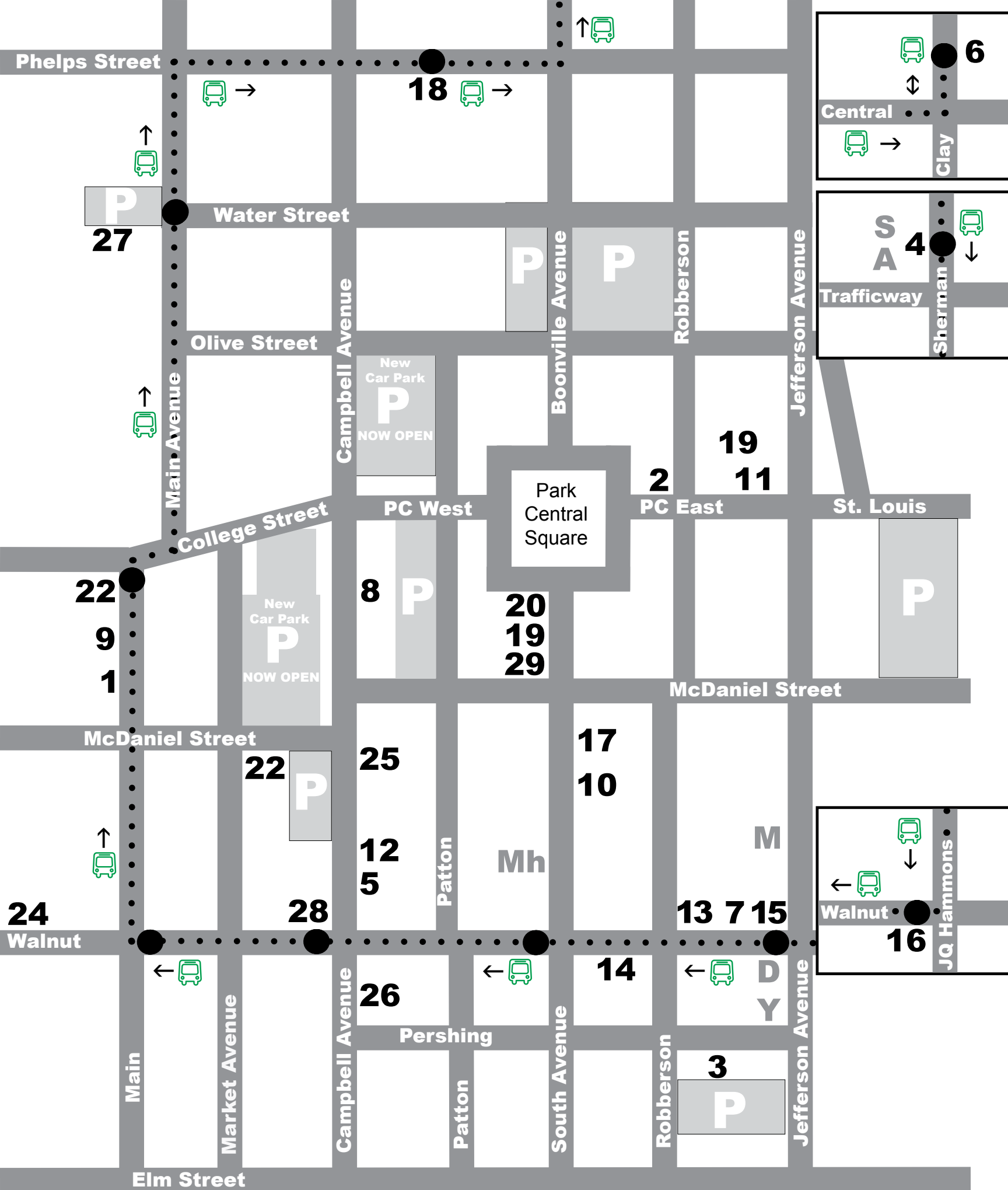
Ismael Ortiz works in found objects, "conceptually combined to express the meaning and relevance of daily items," he said. Sophie Parker, a painter, said she tries "to capture nature's balance between chaos and order, the wild and the tame."



## OTC's artists shine in Fall 2008 Student Showcase exhibition



OTC features 2D and 3D art by students, as well as live theater, music and a memorial photography display during the Dec. 5 Art Walk.



**#** = Art Walk Venue  
**A** = Art Walk Sponsor  
**P** = Parking

• • • = Shuttle Route  
 ● = Shuttle Stop  
 = Shuttle Direction

**A**=Springfield Regional Arts Council  
**D**=Downtown Minuteman Press  
**M**=Mille's  
**S**=Springfield Regional Opera  
**Y**=YMCA Family Art Night

**1 Bellwether Gallery of the Arts**, 600 W. College St., presents **The Artwork of Frances Norheim and Thorn Norheim: A Memorial**. Springfield native Frances Horton Norheim (1936-2008) drew inspiration from the rolling hills of the Ozarks when she began drawing at an early age. Thorn Joel Norheim (1908-1989) was born in Eidsvold, Norway. Traveling the world at an early age and came to the United States in 1923. He was personally commissioned by the King of Norway, King Haakon, and Crown Princess Martha, to do paintings for the king's palace. Frances and Thorn met and married in California, where they became known as "The Art Couple." This show honors their lives' work. (417) 831-1778 [www.bellwetherarts.com](http://www.bellwetherarts.com) Open 1-5 p.m. T-F; Noon-3 p.m. Sat

**2 Big Smile Photography**, 207 Park Central East, features international award-winning wedding and portrait photographer Jeremy Lawson's creative lifestyle wedding and portraiture work, and displays his one-of-a-kind portrait and wedding images from local events as well as events from around the world. (417) 527-2885 [www.bigsmilestudios.com](http://www.bigsmilestudios.com) Open 9 a.m.-5 p.m. M-F and by appointment

**3 Bodhi Salon and Spa**, 431 S. Jefferson, Ste. 106, presents **Barb Johnson-Kille**. A graduate of the New England School of Art and Design in Boston, Johnson-Kille has been painting since grade school, producing her first mural at age 12. "I love painting to uplift an environment or create the perfect atmosphere in a home or office," she said. "Custom work or faux finishing is so enjoyable for me; it is exciting to transform a room with color and energy." Johnson-Kille is also a licensed massage therapist at Bodhi. A cutting edge salon and spa that offers a full menu of services, Bodhi keeps it green with earth-friendly products and practices that make feeling good feel even better. (417) 864-4399 [www.bodhisalonandspa.com](http://www.bodhisalonandspa.com) Open 9 a.m.-9 p.m. M-F; 9 a.m.-6 p.m. Sat

**4 The Creamery Arts Center**, 411 N. Sherman Parkway, presents **Paintings by Deborah G. Wilson** and **Photography by the S.W. Missouri Camera Club** 6-9 p.m. during the Art Walk. A Missouri native and world traveler, Wilson has pursued her art in all corners of the globe, most recently in Hawaii. She calls herself a "soul painter" because "my artwork is born out of my soul rather than from my fingertips." Watercolor is her favorite medium. (417) 862-ARTS (2787) [www.SpringfieldArts.org](http://www.SpringfieldArts.org) Open 9 a.m.-5 p.m. M-F; closed major holidays

**5 DB Design Salon & Art Gallery**, 326 S. Campbell, presents **Featured Artist Parker Asay**. An accomplished graduate of the University of Missouri with a degree in art, Asay works in pen-and-ink, watercolors and mixed media. DB Design continues to show works by painters Jerry Ellis and Karolyn Farrell. DB also displays the work of in-house artists Tammy Kirks, John Ehlers, Katrina Stevens and Duane Bone. (417) 864-4343

**6 Drury Pool Art Center Gallery**, 940 N. Clay St., presents **Retrospective: Tom Parker**, featuring the work of Drury Art Department Chair and Tom Parker. A professor of art and art history who has been at Drury since 1980, Parker has won many prizes and awards for his work, which he regularly exhibits in solo and group shows. Parker's work has appeared in major museums, including the Whitney Museum, the Chicago Art Institute, the Nelson-Atkins Museum and the Gallery du Temple in Lacoste, France. (417) 873-7263 [www.drury.edu/paccgallery](http://www.drury.edu/paccgallery) Open 8 a.m.-5 p.m. M, T, W, F; 8 a.m.-8 p.m. Th

# Gallery BUZZ

**7 Elite PhotoArt**, 325 E. Walnut St., features the works of **Photographer J. Hayes**, including images from the region and from his travels. For more information, visit [www.jhayesphotography.com](http://www.jhayesphotography.com). Also on display are images by Ammie Cyr, Nancy Rose and gallery owners Will and Lisa Roberts. (417) 569-3322 or (417) 234-7761 [www.elitephotoart.com](http://www.elitephotoart.com) Open 10 a.m.-6 p.m. M-Sat or by appointment.

**8 Fashioned By Jaye**, 212 S. Campbell, presents **Paper Mosaics** by Jaye Coltharp, featuring scenes of downtown Springfield. Fashioned By Jaye is a gallery and boutique featuring work by local artists and locally handmade jewelry, handbags, home decor, and gift items. (417) 862-4100 [www.fashionedbyjaye.com](http://www.fashionedbyjaye.com) Open Noon-7 p.m. M-F; 2-7 p.m. Sat

**9 Fignant Art Gallery & Culture House**, 600 W. College, Kelly Kennedy of Art & Souls Studio joins the in-house artists at Fignant with an opening reception during the Dec. 5 Art Walk. A native of Iowa, Kennedy brought her 15 years of experience as a painter, potter and sculptor to the Ozarks in 2004. (417) 868-8179 Open 10 a.m.-4 p.m. T; 10 a.m.-6 p.m. W-F; 10 a.m.-4 p.m. Sat

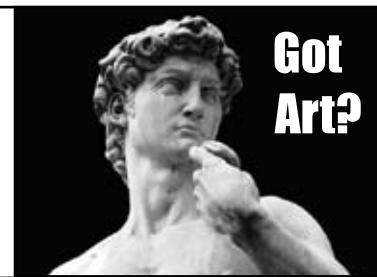
**10 Fitzwilly's Gifts & Antiques**, 308 South Ave., presents **Landscapes** by Charli Stout, as well as watercolors. Not only is Charli an award-winning artist, but also she has been published. (417) 866-3696 Open 10 a.m.-5 p.m. M-F, 11 a.m.-4 p.m. Sat; First Friday hours 11 a.m.-10 p.m.

**11 Gillioz Theatre**, 325 Park Central East, presents **Robert E. Smith**. A nationally known folk and outsider artist, Smith is also a writer of fiction and autobiography, a singer and a songwriter. Though best known for his work on poster board and canvas, he has also painted tables and televisions. An Ozarks original, Smith has displayed his works at the prestigious Museum of American Folk Art in New York City, and his paintings have been sold in galleries coast to coast. (417) 863-7843 [www.gillioz.org](http://www.gillioz.org)

**12 Global Fayre**, 324 S. Campbell, presents **Stringfield**. The dulcimer-wielding duo of Gail Morrissey and Victoria Johnson brings their award-winning skills to Global Fayre where they will feature a Christmas set during the Dec. 5 Art Walk. (417) 873-9792 [www.globalfayre.com](http://www.globalfayre.com) Open 10 a.m.-6 p.m. M-Sat or by appointment

**13 Good Girl Art Gallery**, 325 E. Walnut St., Ste. 101, presents **Paintings by Nick Owens** and **Ceramicist Bryan Lynch**. Lynch's show features his functional ceramics loosely based on Majolica with experimentations in sgraffito. (417) 865-7055 [www.goodgirlartgallery.com](http://www.goodgirlartgallery.com) Open 10 a.m.-8 p.m. T-F; 11 a.m.-8 p.m. Sat

**14 Hawthorn Galleries Inc.**, 214 E. Walnut St., presents its third annual **Holiday Gift Show**, including a wide selection of original paintings, prints, sculpture, glass work, bronzes and one-of-a-kind jewelry creations. With original artwork starting at \$15, there's a unique holiday gift for every budget. The



Art Walk reception features live music by Guitarist Dale Augustson. (417) 866-6688 [www.myspace.com/hawthorngallery](http://www.myspace.com/hawthorngallery) Open 10 a.m.-6 p.m. T-F; 1-5 p.m. Sat

**15 MSU Art & Design Gallery**, 333 E. Walnut, presents **MSU Art & Design Department BFA Senior Exhibit**. Student artists featured at the gallery are Laurie Marshal, Alyson Srch, Bret Ballard, Jessica Diliberto, Justin Dartt, Samuel Hitchcock, Zack Tate and Chuck Travers. BFA students Amand LeBrun, Gavriel Taylor, James Rutherford, Jake McDaniel and Brian Moore are showing their works at Brick City. (417) 829-5092 [www.art.missouristate.edu/gallery.php](http://www.art.missouristate.edu/gallery.php) Open 10 a.m.-6 p.m. T-Th; 10 a.m.-8 p.m. F; Noon-6 p.m. Sat, closed Sunday, Monday and university holidays

**16 MSU Student Exhibition Center**, 838 E. Walnut St., presents **MSU Art & Design Department BFA Senior Exhibit**. Students featured are Josh Bell and Lucas Witt, ceramics; Lindsey Burkes and Rebecca Lorenson, painting; Sara Kate Copeland, drawing; Kayti Doolittle, mixed-media installation; and Zoey Engel, animation/printmaking. (417) 836-6999 [www.sec.missouristate.edu](http://www.sec.missouristate.edu) Open 1-5 p.m. T-Sat, closed major holidays

**17 Nonna's Italian American Café**, 306 South Ave., features **Artist Ina Crisman**. Crisman discovered her affinity for painting four years ago. After studying portraiture with Karen Murphy, Crisman said, "A whole new world opened up for me, and I have found that seeing the world through artist's eyes is truly a gift." Over time, her subject matter has expanded to embrace landscapes, animals, architecture and abstracts. (417) 831-1222 [www.nonnascafe.com](http://www.nonnascafe.com)

**18 Obelisk Home**, 214 W. Phelps, makes its Art Walk debut with **Artists Ismael Ortiz and Sophie Parker**. Ortiz works with found objects. "By placing them in a new context where balance, purpose, placement and harmony associate the pieces to one another, I ask the viewer to rethink the familiar objects that make up a piece and relate them to present situations and social conditions." Parker, a painter, noted that her works "are an exploration of the natural world." (417) 616-6488 [www.obeliskhome.com](http://www.obeliskhome.com)

**19 OTC Fine Art Gallery**, 325 Park Central East, Third Floor, presents **Fall 2008 Student Showcase**, featuring works by OTC Two-Dimensional Design, Three-Dimensional Design, Drawing I and II and Painting classes. Readings of 10-minute plays from Playwriting 101 and other dramatic presentations will be performed on the Gillioz Theatre stage 7:30-10 p.m. OTC also presents a **Memorial Exhibition of the Photography of Jason Isebler**. OTC also offers a food table and coffee from The Coffee Ethic. (417) 447-8873 Open 9 a.m.-6 p.m. M-Th; 9 a.m.-6 p.m. F; 9 a.m.-10 p.m. on First Fridays

**20 Park Central Gallery**, 122 W. Park Central Square, is a department of Hagerman New Urbanism Architects and Developers. The gallery offers a variety of art, and past exhibits include Watercolor USA Honor Society artists,

local artists of merit and emerging artists. (417) 869-6888 Open 8:30 a.m.-5:30 p.m. M-F, 6:30-9 p.m. First Fridays, and by appointment

**21 Park Central Square Branch Library**, 128 Park Central Square, presents **Katie O'Neal: Photography and Chuck Travers: Still Life**. (417) 831-1342 [www.myspace.com/parkcentrallibrary](http://www.myspace.com/parkcentrallibrary) Open 7 a.m.-8 p.m. M-Th; 7 a.m.-10 p.m. F-Sat

**22 Pure Boutique**, 438 W. McDaniel, presents **The Art of Chassidy Hawkins**. Pure: Fashion in a contemporary boutique that features local artists and their art. Pure delivers the latest looks to Springfield by creating complete images for both men and women. (417) 832-0800 Open 11 a.m.-7 p.m. M-Sat

**23 Randy Bacon Photography Studio & Gallery**, 600 W. College St., presents **The Art of Sarah Lai-cheuk wah**. A painter from Hong Kong who, in 2007, was honored with Cheng's Fine Arts Award in Western Painting, Grotto's Fine Arts Ltd's Award and the Ramon Woon Creative Prize. The Bacon Gallery also features a free concert by **Rhett Roberson**. Ongoing displays include **Love Nests: An Exhibit of Marriage, Life and Each Other** by Randy Bacon in collaboration with Ozarks Marriage Matters & Operation Us, and winning art work from CASA. Love Nests Calendars and CASA cards are on sale at the gallery. (417) 868-8179 [www.randybacon.com](http://www.randybacon.com) [www.galleriesounds.net](http://www.galleriesounds.net) Open 11 a.m.-6 p.m. T-F; 11 a.m.-4 p.m. Sat

**24 Six23 Condos**, 623 W. Walnut, solicited art from more than 50 regional artists, choosing the best to display in its **Looby Gallery**. (417) 343-2909 [www.Six23Condos.com](http://www.Six23Condos.com)

**25 Springfield Hot Glass Studio**, 314 S. Campbell Ave., will craft **Large Bowls and Vases in Holiday Colors** as visitors bask in the glow of the glass furnace. (417) 868-8181 [www.springfieldhotglass.com](http://www.springfieldhotglass.com) Open 10 a.m.-6 p.m. M-Th; 10 a.m.-10 p.m. F-Sat

**26 Springfield Pottery**, 416 S. Campbell Ave., is a fine craft gallery and community clay center that features some of the best examples of fine craft in clay, wood, metal, glass, fibers, photography, printmaking, jewelry, and more by over 45 local regional and national artists. (417) 864-4677 [www.springfieldpottery.com](http://www.springfieldpottery.com) Open 11 a.m.-6 p.m. T-Sat

**27 Storefront Studios**, 319 N. Main St., features its newest member, **Victor Edwin Humphrey** in December. "I try to influence people to think deeply, to smile – and then giggle – at the absurdity of the ambiguities of modern life and death, much as children do when they are not totally Xed out emotionally and spiritually by immature adults." Storefront Studios will warm up visitors with hot chocolate and cider while they check out the art and talk to the artists. (417) 862-ARTS (2787)

**28 Studio 405**, 405 W. Walnut St., presents **Shake Well and Buy Often** a new installation by Jeffrey Allen Price. (417) 865-0450

**29 Susan Sommer-Luarca Fine Art Gallery and Frame Shoppe**, 221 Park Central South, exhibits a large body of Susan's work in originals and fine giclee, museum prints. Susan is an internationally known and widely acclaimed artist with the honor of being Official Artist for the U.S. Olympic Team, Beijing. Official Triple Crown Horse Racing Artist and Artist for the 2008 Super Bowl, Susan also paints LIVE at many nationally televised events. (417) 866-4ART (4278) [www.sslworldwide.com](http://www.sslworldwide.com)

# Free concert, international art headline Bacon Studio Gallery

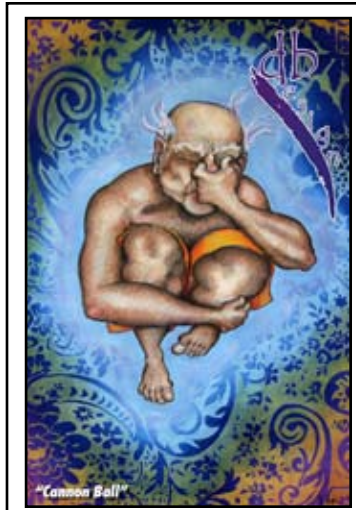


Musician Rhett Roberson will perform live at Randy Bacon Photography Studio & Gallery during the Dec. 5 Art Walk. The singer/songwriter describes his songs as a "place where the grit of roots rock shakes hands with indie folk."

Also in the spotlight in December is Hong Kong artist Sarah LAI-cheuk wah.



The Sea  
by Sarah  
LAI-cheuk wah.



## DB Design jumps in feet first

Artist Parker Asay is the featured artist at DB Design in December, presenting original works in pen-and-ink, watercolors and mixed media.

## Art Walk launches holiday raffle

Art Walk will raffle off two \$100 Shopping Spree certificates during December

First Friday Art Walk retail venues are now selling raffle tickets for two \$100 Shopping Spree certificates. The winning tickets will be drawn at 1 p.m. Dec. 19 at The Creamery Arts Center.

Raffle tickets are \$1, and proceeds of ticket sales go to support the nonprofit First Friday Art Walk Inc. Ticket buyers also have the option of signing up for free Art Walk email updates.

Shopping Spree certificates are good for art and merchandise at all Art Walk retail venues.

# Thank you to our outstanding First Friday Art Walk sponsors!

First Friday Art Walk is a program of



...transforming lives and enriching our Community through the Arts

411 Sherman Parkway    www.SpringfieldArts.org    (417) 862-ARTS (2787)



**Anne Cox**  
Artiste

www.annecox.com  
anne@annecox.com

Studio (417) 863-1617  
Cell (417) 838-7177



Mille's Turn of the Century Cafe, Springfield's only urban casual cafe, serves American/International Fusion food created by chefs who strive for perfection on every plate.

313 S. Jefferson Ave.    (417) 831-1996

Art Walk printing provided by



**MINUTEMAN PRESS**  
The First & Last Step In Printing

334 E. Walnut St.    (417) 866-7261



Downtown Springfield Community Improvement District



Proud to Support First Friday Art Walk

"The arts are an integral part of Springfield's economic and cultural vitality ... We invite you to experience the artistic majesty that is professional operatic performance."

— Dr. Richard Aiken

SPRINGFIELD REGIONAL  
**OPERA**

411 Sherman Parkway  
(417) 863-1960

*Artfully Crafted*

SERVED WITH PRIDE BY





