

I WALK THE WALK

# Art Walk

FIRST FRIDAY  
ART WALK

February 2009

Serving Springfield's Downtown Arts District

## Fall in love with art during the February Art Walk

If you love art, music and downtown Springfield, First Friday Art Walk is your Valentine in February.

Fiber Artist Dianna Callahan takes center stage at OTC Fine Art Gallery. Callahan's show includes portrait quilts and soft sculptures.

Accomplished local painter



Dianna Callahan's art quilts are on display at OTC Fine Art Gallery.



Debbie Sutherland is featured at DB Design Salon & Gallery in February and March.

Art Walkers can enjoy a free concert by Springfield favorite

Lyal Strickland and new works by the in-house artists at Figment

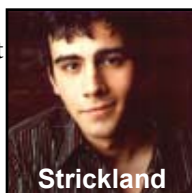
Art Gallery & Culture House.

See Randy Bacon's

*Favorite Portraits* from 2008, including 40 never-before-exhibited images, and enjoy music by Black Box Revue at Bacon Photography Studio &



Debbie Sutherland



Strickland



Randy Bacon

Gallery.

At MSU Art & Design Gallery, Photographers Dana Fritz, Larry Gawel and Gwen Walstrand provide their varied perspectives in their show, *Garden Views: The Culture of Nature*.

Photography is also the focus at Drury University's

Pool Art Center Gallery. Photographer Susan Carr explores the America's last unique environment – the private home – in *Personal Spaces: Details of American Homes*.

Good Girl Art Gallery presents



Dana Fritz

the colorful pop-culture portraits of Painter Matthew Bell, who brings a kitschy dimension to his large paintings.

Art Walkers can also experience the artistry of Painter Stephanie Cra-

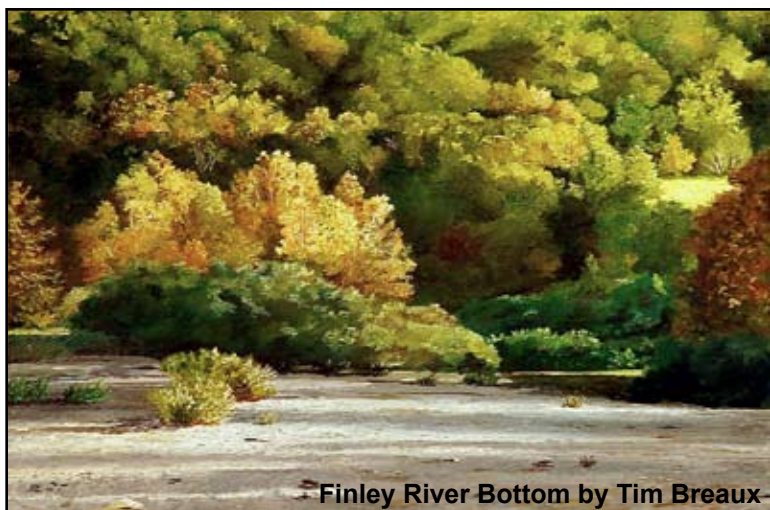


Matthew Bell

mer at Obelisk Home, and view the iconic images of Scouting with *Original Scout Paintings* by Norman Rockwell,

Joseph Csatari and Ross Young at the MSU Student Exhibition Center.

### Meet the Artist at Hawthorn Galleries



Finley River Bottom by Tim Breaux

Visit Hawthorn Galleries during the Art Walk to meet local Artist Tim Breaux and enjoy Hawthorn's diverse collections.

Find that special something for your Valentine at art auctions during First Friday Art Walk, or create your own hand-made gift for only \$10 with the new First Friday Mini-Make projects at Springfield Pottery.

First Friday is sponsoring a silent art auction to benefit Victory Mission in association with Bellwether Gallery of the Arts. Auction items are on view and available for bid at various Art Walk

### HEART of the city

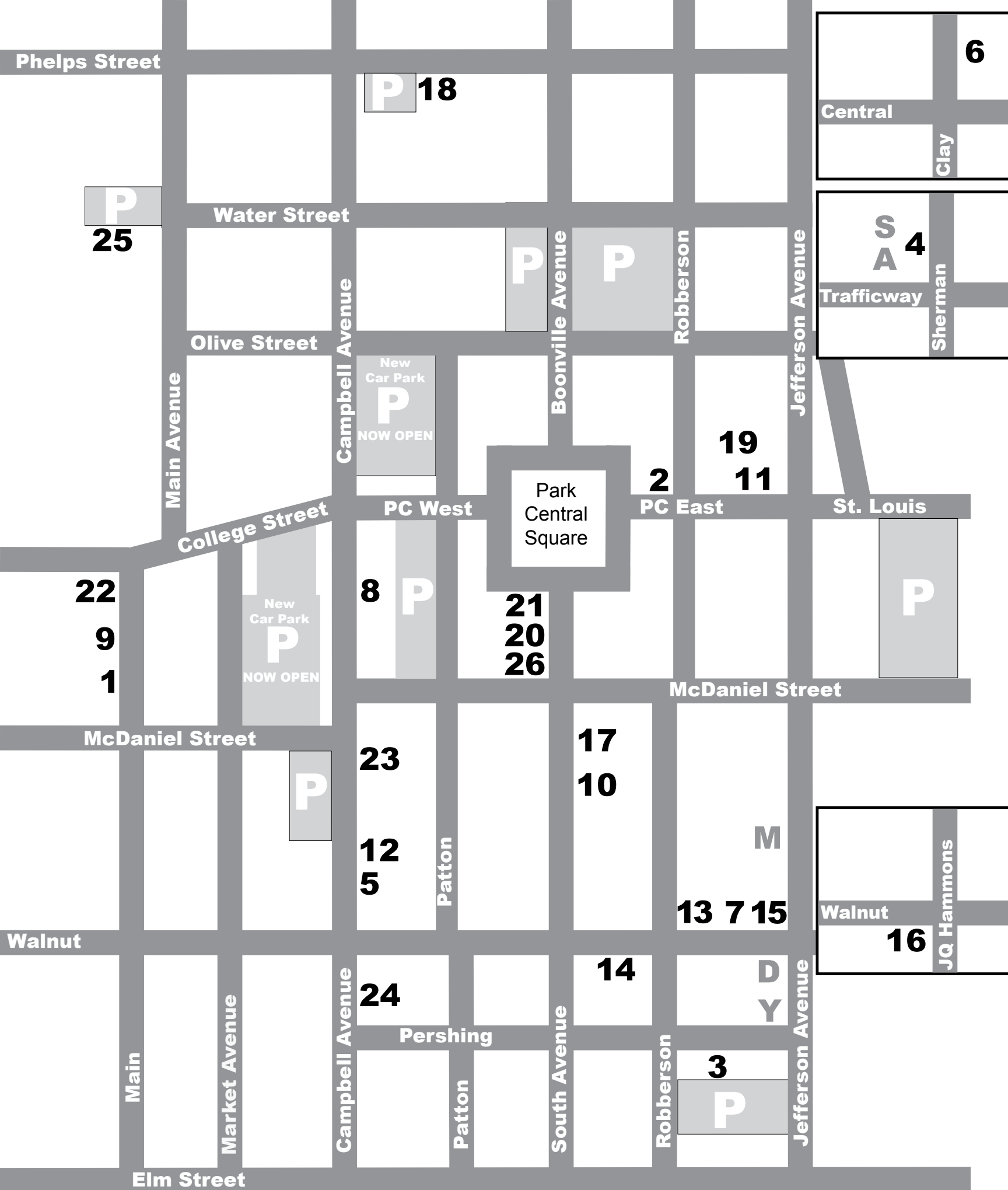


Hearts for the Arts

venues. The auction culminates with the March 3 fundraiser "Building a Different Me," featuring New York Times best-selling authors Ron Hall and Denver Moore.

The Creamery will auction original art at its *Hearts for the Arts Party* on First Friday. Proceeds benefit the Springfield Regional Arts Council.

Meanwhile, Springfield Pottery offers First Friday Mini-Makes, small projects crafted during the Art Walk and picked up later. February's project is Clay Hearts.



**#** = Art Walk Venue    **A** = Art Walk Sponsor    **P** = FREE Parking

**A**=Springfield Regional Arts Council  
**D**=Downtown Minuteman Press  
**M**=Mille's  
**S**=Springfield Regional Opera  
**Y**=Downtown YMCA

**1 Bellwether Gallery of the Arts,** 600 W. College St., presents **The Best of Springfield High School Art Students.** Come and view the two and three-dimensional work of our artists of the future. (417) 831-1778 [www.bellwetherarts.com](http://www.bellwetherarts.com) Open 1-5 p.m. T-F; Noon-3 p.m. Sat

**2 Big Smile Photography,** 207 Park Central East, features international award-winning wedding and portrait photographer Jeremy Lawson's creative lifestyle wedding and portraiture work, and displays his one-of-a-kind portrait and wedding images from local events as well as events from around the world. (417) 527-2885 [www.bigsmilestudios.com](http://www.bigsmilestudios.com) Open 9 a.m.-5 p.m. M-F and by appointment

**3 Bodhi Salon and Spa,** 431 S. Jefferson, Ste. 106, continues its dual show in February. **Artist Sarah Splitter**, who often works in pen and ink, explores the use of watercolors in combination with her breath, creating images that are "snapshots" of her exhalations. **Photographer Bethany Taylor** displays several pieces from her latest photography collection, titled *Discovering Energy*. This series is inspired by her passion for sustainability and her ambition to help fuel the alternative energy industry. (417) 864-4399 [www.bodhisalonandspa.com](http://www.bodhisalonandspa.com) Open 9 a.m.-9 p.m. M-F; 9 a.m.-6 p.m. Sat

**4 The Creamery Arts Center,** 411 N. Sherman Parkway, concludes its **Hearts For The Arts** display and art auction with the *Hearts for the Arts Party* during the Feb. 6 Art Walk. *Hearts for the Arts* features works done on 12-by-12-inch tiles by more than 80 local and regional artists, photographers and writers. Silent auction bids will be accepted at [www.SpringfieldArts.org](http://www.SpringfieldArts.org) until 4 p.m. on Feb. 6, and bids may be made in person at The Creamery until 8 p.m. during the Art Walk. (417) 862-ARTS (2787) [www.SpringfieldArts.org](http://www.SpringfieldArts.org) Open 9 a.m.-5 p.m. M-F; closed major holidays

**5 DB Design Salon & Art Gallery,** 326 S. Campbell, is delighted to feature **Debbie Sutherland**, an accomplished artist in watercolor and acrylic, during February and March. Debbie has been painting all her life, winning numerous awards and studying under highly renowned artists including Rex Brandt, Milford Zornes and Irving Shapiro. Debbie is a member of various watercolor societies and is currently serves on the board of the Missouri Watercolor Society. DB also displays the work of artists Tammy Kirks, John Ehlers, Katrina Stevens and Duane Bone. (417) 864-4343

**6 Drury Pool Art Center Gallery,** 940 N. Clay St., presents **Personal Spaces: Details of American Homes** by Photographer Susan Carr. In early 2000, Carr began photographing the homes of people who have lived in the same place for 40 years or more, exploring the personal spaces that constitute some of our few remaining unique environments. The homogenization of the American landscape is refuted in this display of individuality and private life. Also in February, the Pool Art Center features the **Study Abroad: Volos Student Exhibition.** (417) 873-7263 [www.drury.edu/pacgallery](http://www.drury.edu/pacgallery) Open 8 a.m.-5 p.m. M, T, W, F; 8 a.m.-8 p.m. Th

**7 Elite PhotoArt,** 325 E. Walnut St., features artwork from three of its valued employees: **Debbie Joiner, Brian Koschak and Christie Bonnier.** Joiner displays her photography, highlighting her digital talents and her artistic eye. Koschak, a cartoonist who has created graphics for

# Gallery BUZZ

albums, concert posters and comic books, brings his bold line illustrations to large pop art with a fine art flare. Bonnier, a graduate of Antonelli Institute for Art & Photography in Philadelphia, showcases her personal fine art photography. Also see images by Gary Adamson, Ammie Cyr, Nancy Rose and Gallery owners, Will and Lisa Roberts. Come enjoy hot Java Dave's coffee, hot chocolate, delicious cookies and each other's company. (417) 569-3322 or (417) 234-7761 [www.elitephotoart.com](http://www.elitephotoart.com) Open 10 a.m.-6 p.m. T-F; 11 a.m.-3 p.m. Sat or by appointment.

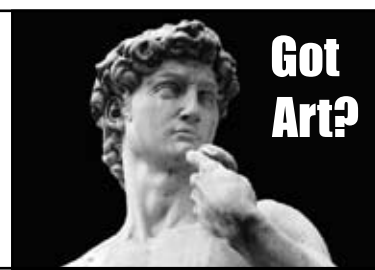
**8 Fashioned By Jaye,** 212 S. Campbell, presents **Photographs by Kassidi Bremer.** Fashioned By Jaye is a gallery and boutique featuring work by local artists and locally handmade jewelry, handbags, home decor, and gift items. (417) 862-4100 [www.fashionedbyjaye.com](http://www.fashionedbyjaye.com) Open Noon-7 p.m. M-F; 2-7 p.m. Sat

**9 Figment Art Gallery & Culture House,** 600 W. College, presents a free concert by **Lyal Strickland** 7-10 p.m. during the Feb. 6 Art Walk. Lyal's much anticipated CD, *Well Fed & High Strung*, was recorded in Springfield in two sessions. Don't miss brand new artwork by the Figment Artists: Painter/Potter Kelly Kennedy; Potter Brian King; Painter Kat Allie; and Painter Abby Waters. Also, take a tour of Figment's latest addition, Monarch Recording Studio. (417) 868-8179 Open 10 a.m.-4 p.m. T; 10 a.m.-6 p.m. W-F; 10 a.m.-4 p.m. Sat

**10 Fitzwilly's Gifts & Antiques,** 308 South Ave., features select landscapes, reflections of Tuscany, florals and other watercolors by Charli Stout. Fitzwilly's is always pleased to showcase talented artists such as Charli Stout. (417) 866-3696 Open 10 a.m.-5 p.m. M-F; 11 a.m.-4 p.m. Sat; First Friday hours 11 a.m.-10 p.m.

**11 Gillioz Theatre,** 325 Park Central East, presents **Photographer Carl James.** A retired architect who has been photographing seriously for around 20 years, Carl has been a member of the Springfield Visual Arts Alliance for approximately six years, and his work has been featured in numerous local venues. "My photography interests vary, but my primary interest is landscapes, architecture and bridges," Carl said. (417) 863-7843 [www.gillioz.org](http://www.gillioz.org)

**12 Global Fayre,** 324 S. Campbell, presents **Josie Mai: Commonalities.** Seven works on paper reflect the imagery, color, pattern and spirit of a meditation on Boyer's commonalities, which are: All of us experience the cycles of life. All of us develop symbols. All of us respond to the aesthetic. All of us have the capacity to recall the past and anticipate the future. All of us develop some forms of social bonding. All of us are connected to the ecology of the planet. All of us produce and consume. All of us seek meaning and purpose. Josie Mai is assistant professor of art at Missouri Southern State University, visual arts faculty at Missouri Fine Arts Academy, and the director of Soulfari Kenya Inc., a nonprofit engaged in humanitarian service in



Kenya. (417) 873-9792 [www.globalfayre.com](http://www.globalfayre.com) Open 10 a.m.-6 p.m. M-Sat or by appointment

**13 Good Girl Art Gallery,** 325 E. Walnut St., Ste. 101, presents **Painter Matthew Bell.** A former MSU student from Carrollton, Mo., Matthew's large paintings are portraits of people reflecting pop culture. His perspectives and use of bright colors provide an interesting and kitschy dimension. The show will continue until March 4. (417) 865-7055 [www.goodgirlartgallery.com](http://www.goodgirlartgallery.com) Open 10 a.m.-8 p.m. T-F; 11 a.m.-8 p.m. Sat

**14 Hawthorn Galleries Inc.,** 214 E. Walnut St., is proud to present the artwork of local **Artist Tim Breaux.** Covering a wide range of subject matter, Breaux's work is often influenced by "a sense of community and hard work." Meet the artist and enjoy live music at the opening reception, 6-10 p.m. during the Feb. 6 Art Walk. (417) 866-6688 [www.myspace.com/hawthorn-gallery](http://www.myspace.com/hawthorn-gallery) Open 10 a.m.-6 p.m. T-F; 1-5 p.m. Sat

**15 MSU Art & Design Gallery,** 333 E. Walnut, presents **Garden Views: The Culture of Nature.** Photographers Dana Fritz, Larry Gawe and Gwen Walstrand regard gardens from three distinct perspectives. (417) 829-5092 [www.art.missouristate.edu/gallery.php](http://www.art.missouristate.edu/gallery.php) Open 10 a.m.-6 p.m. T-Th; 10 a.m.-8 p.m. F; Noon-6 p.m. Sat, closed Sunday, Monday and university holidays

**16 MSU Student Exhibition Center,** 838 E. Walnut St., presents **Original Scout Paintings by Norman Rockwell, Joseph Csatari and Ross Young.** The exhibit, sponsored by the Ozarks Trail Council of Boy Scouts of America and the College of Arts and Letters Public Art Committee of Missouri State University, celebrates the importance of Scouting and its many volunteers. The exhibit kicks off the Boy Scout Anniversary during February. The paintings will be on display at the Student Exhibition Center through Feb. 12, with a reception during the Feb. 6 Art Walk. (417) 836-6999 [www.sec.missouristate.edu](http://www.sec.missouristate.edu) Open 1-5 p.m. T-Sat, closed major holidays

**17 Nonna's Italian American Café,** 306 South Ave., presents **Self Portrait Works by Isaac Kerner.** (417) 831-1222 [www.nonnascafe.com](http://www.nonnascafe.com)

**18 Obelisk Home,** 214 W. Phelps, presents **Painter Stephanie Cramer.** "I see the painter as analogous to an actor/director bringing the viewer along to new places, memories, dreams, and family histories. I like to give the viewer space to interpret what they see on the canvas," Cramer said. "Painting is like a freeze frame. It helps both the viewer and the painter to pause - if just for a second - as we enter into that two-dimensional space." (417) 616-6488 [www.obeliskhome.com](http://www.obeliskhome.com)

**19 OTC Fine Art Gallery,** 325 Park Central East, Third Floor, is thrilled to feature **The Art of Dianna Callahan**, fibers artist. "For the last year, I have been making portrait quilts by drawing portraits on fabric with oil stick,

then appliquéing and quilting the wall-hung pieces," Callahan said. "I also have a few soft sculptures with fabric and wire." OTC Fine Art Gallery will hold an opening reception for the artist during Art Walk, and Dianna's work will remain on display through March 2. (417) 447-8873 Open 9 a.m.-6 p.m. M-Th; 9 a.m.-6 p.m. F; 9 a.m.-10 p.m. on First Fridays

**20 Park Central Gallery,** 122 W. Park Central Square, is a department of Hagerman New Urbanism Architects and Developers. The gallery focuses on local artists and often features the work of owners Bo and Jerry Hagerman. (417) 869-6888 Open 8:30 a.m.-5:30 p.m. M-F, 6:30-9 p.m. First Fridays, and by appointment

**21 Park Central Square Branch Library,** 128 Park Central Square, presents **Challenging Conceptions: The Artwork of Lynley Farris.** (417) 831-1342 [www.myspace.com/parkcentrallibrary](http://www.myspace.com/parkcentrallibrary) Open 7 a.m.-8 p.m. M-Th; 7 a.m.-10 p.m. F-Sat

**22 Randy Bacon Photography Studio & Gallery,** 600 W. College St., opens its First Friday Art Walk with Randy's most extensive exhibition of **Portrait Photographs** in years. Randy presents his favorite photos of 2008, including 40 never-before-exhibited images. Bacon Studio & Gallery also shakes up Art Walk with the popular DJs, producers and re-mixers of **Black Box Revue**, 7-10 p.m. They love music and they love to make us dance with their vast knowledge of the best new wave, indie and dance rock. For more information, call (417) 868-8179. [www.randybacon.com](http://www.randybacon.com) [www.gallerysounds.net](http://www.gallerysounds.net) Open 11 a.m.-6 p.m. T-F; 11 a.m.-4 p.m. Sat

**23 Springfield Hot Glass Studio,** 314 S. Campbell Ave., features the artistry of master craftsman Terry Bloodworth with **Live Glass-blowing and Crafting Demonstrations** throughout First Friday Art Walk. (417) 868-8181 [www.springfieldhotglass.com](http://www.springfieldhotglass.com) Open 10 a.m.-6 p.m. M-Th; 10 a.m.-10 p.m. F-Sat

**24 Springfield Pottery,** 416 S. Campbell Ave., introduces **First Friday Mini-Makes** during the Feb. 6 Art Walk. Drop by Springfield Pottery during Art Walk and craft your own quick mini-creation. For a small fee of \$10, Art Walkers of all ages will be guided through the Mini-Make project of the month, which will be fired and ready for pick up in 14 days. February's Mini-Make project is clay hearts. (417) 864-4677 [www.springfieldpottery.com](http://www.springfieldpottery.com) Open 11 a.m.-6 p.m. T-Sat

**25 Storefront Studios,** 319 N. Main St., features the work of more than a dozen local artists in oils, watercolors, acrylics, photography, art cloths, wood carvings, etc. Enjoy a hot cup of chai and view the works of participating artists Alexander Jones, Gina L. Pulis, Candace Fruge, Carol Lee Marshall, Joan Gentry, Victor Edwin Humphrey, Joey Borovicka and Lorraine Taylor. (417) 862-ARTS (2787)

**26 Susan Sommer-Luarca Fine Art Gallery and Frame Shoppe,** 221 Park Central South, exhibits a large body of Susan's work in originals and fine giclee, museum prints. Susan is an internationally known and widely acclaimed artist with the honor of being Official Artist for the U.S. Olympic Team, Beijing. Official Triple Crown Horse Racing Artist and Artist for the 2008 Super Bowl, Susan also paints LIVE at many nationally televised events. (417) 866-4ART (4278) [www.sslworldwide.com](http://www.sslworldwide.com)

# January Art Walk: Faces and Places



Springfield Hot Glass Studio

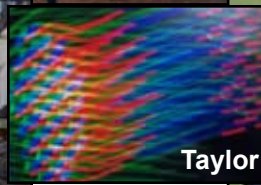


Fashioned by Jaye



Good Girl Art Gallery

Chris Mostyn



Taylor

Photo from *Discovering Energy*



Bodhi Salon & Spa

Sarah Splitter and Bethany Taylor



Mr. Mostyn's Monsterama


## Thank you to our outstanding First Friday Art Walk sponsors!

First Friday Art Walk is a program of



...transforming lives and enriching our Community through the Arts

411 Sherman Parkway    www.SpringfieldArts.org    (417) 862-ARTS (2787)



downtown **Y Not Tri** indoor triathlon

Register for our 2nd annual indoor triathlon at Your Downtown YMCA. Come join the fun on Saturday, February 21st. Register by Wednesday, February 18th.

Contact [kbentley@yourdowntownymca.org](mailto:kbentley@yourdowntownymca.org) for more details.



Mille's Turn of the Century Cafe, Springfield's only urban casual cafe, serves American/International Fusion food created by chefs who strive for perfection on every plate.

313 S. Jefferson Ave.    (417) 831-1996

Art Walk printing provided by



**MINUTEMAN PRESS**  
The First & Last Step In Printing

334 E. Walnut St.    (417) 866-7261



Downtown Springfield Community Improvement District



Proud to Support First Friday Art Walk

"The arts are an integral part of Springfield's economic and cultural vitality ... We invite you to experience the artistic majesty that is professional operatic performance."

— Dr. Richard Aiken

SPRINGFIELD REGIONAL **OPERA**

411 Sherman Parkway    (417) 863-1960

*Artfully Crafted*

SERVED WITH PRIDE BY

